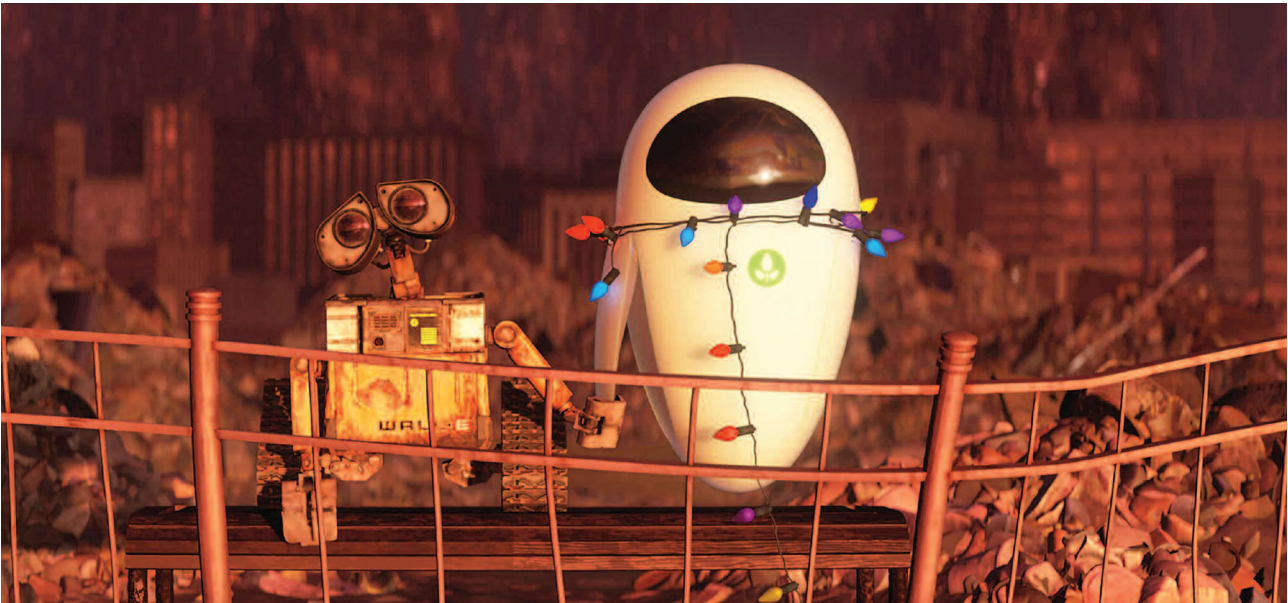


WALL·E



Suitable for:

KS1/2 Literacy, Geography, P.S.H.E and Citizenship

Film details:

U – Contains very mild threat and violence, Running time 103 mins

After hundreds of lonely years of doing what he was built for (and collecting knick-knacks), WALL·E, the last robot on Earth, discovers a new purpose in life when he meets a sleek probe robot named EVE.

Official websites: www.disney.co.uk/DisneyMovies/Walle

Film Narrative

Literacy

Storyboards are drawn for animation as well as live-action films. Animators frame characters and action in the same way, as a cameraperson would do. In the case of WALL·E, award-winning cinematographer Roger Deakins acted as a visual consultant to the animators. WALL·E's producer said they wanted audiences to feel 'as if there really was a cameraperson'. The visuals are also especially important in telling WALL·E's story because there is very little dialogue in the film. The robots communicate using a range of bleeps and sound effects.

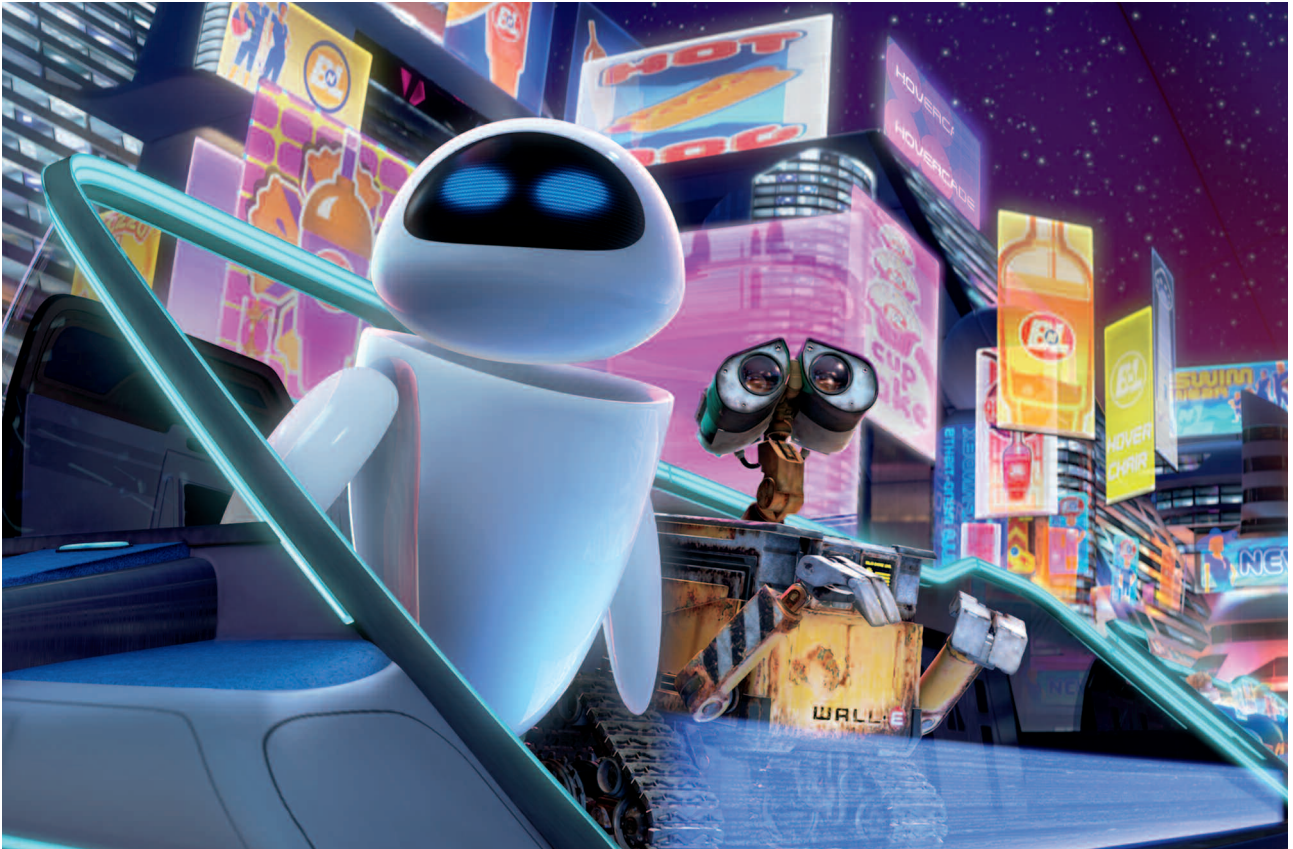
Understanding the purpose and effect of various camera angles and shot types can really help children's drawing and storytelling. Ask pupils to storyboard their favourite scene from WALL·E.

Children could then storyboard an original short story featuring a robot they design themselves and use stop-motion or other animation software to turn it into a film.

Design a Robot

Design and Technology

WALL·E stands for Waste Allocation Load Lifter Earth-Class. Design your own Waste Allocation Load Lifter to pick up litter in and around your school, or to tidy your bedroom! How will it move and lift? Select materials and build a prototype?



Taking Care of the Future

Geography / P.S.H.E. and Citizenship

At the beginning of WALL·E, Earth is deserted. The planet has been filled with rubbish and pollution has made it impossible for humans to survive there. Mankind has escaped on space ships and have become so obese they can't move without the help of robots.

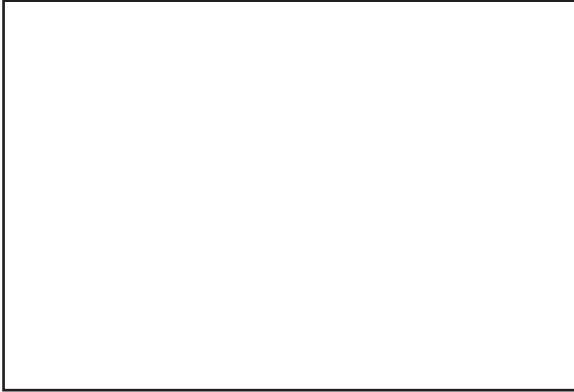
What is the environment like in your school and at home? Look into what we throw away and the ways it could be reduced. How can we improve our environment? Discuss how we make sure we don't end up like the humans in the film. Create an informative and instructional guide for pupils in the year groups below you.

WALL·E is a sponsor of the Keep Britain Tidy campaign. Visit www.thebigtidyup.org

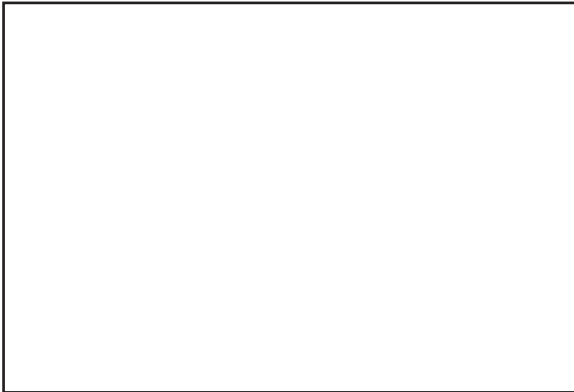
Storyboard

STORYBOARD TEMPLATE

DIALOGUE / SFX



.....
.....
.....
.....
.....



.....
.....
.....
.....
.....

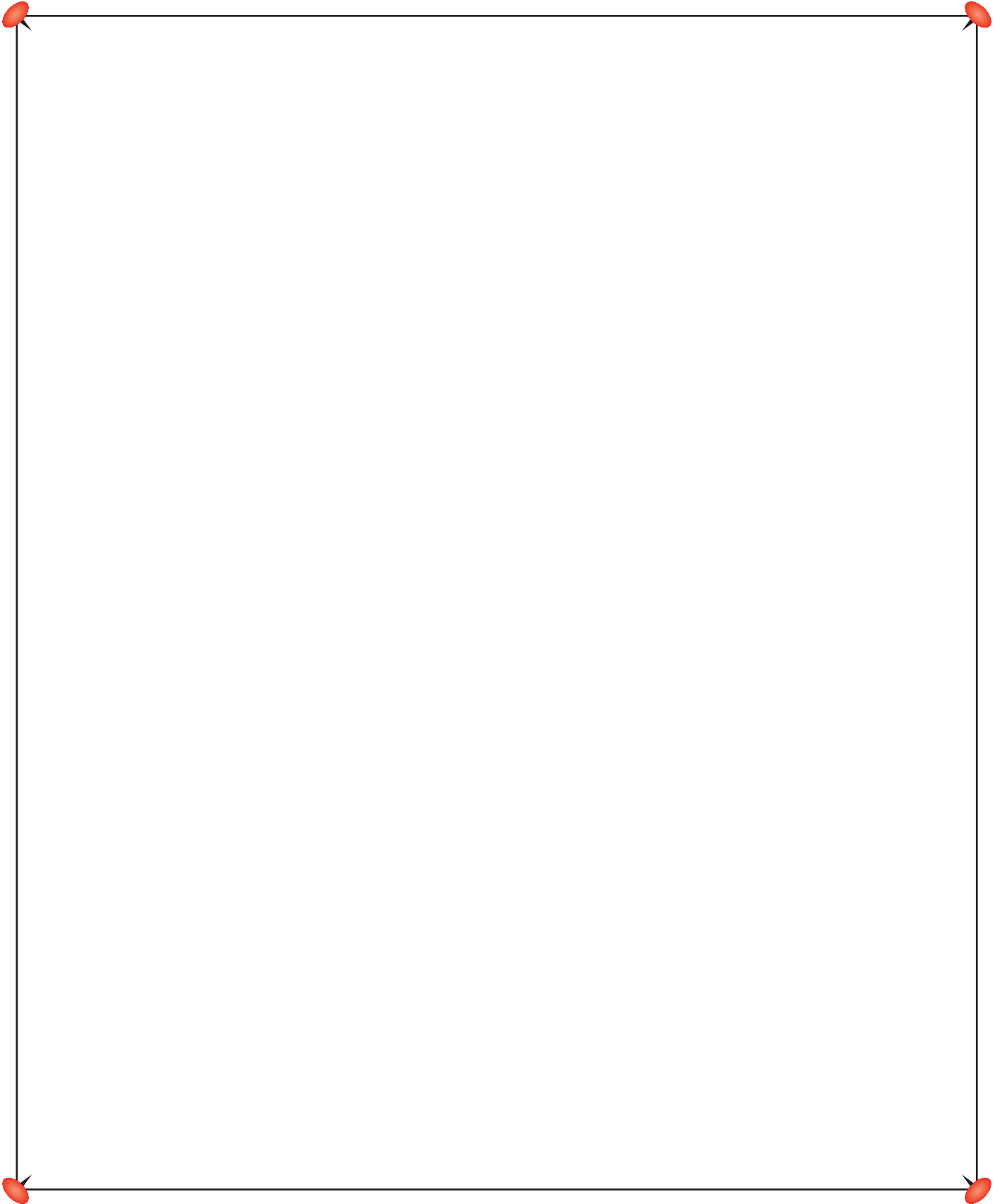


.....
.....
.....
.....
.....



.....
.....
.....
.....
.....

Robot Design – Sketch



Robot Design – Diagram

